

BLEND-AIRE

LPG/AIR MIXER
Models: B3 through B7

Factory Mutual System
Approved

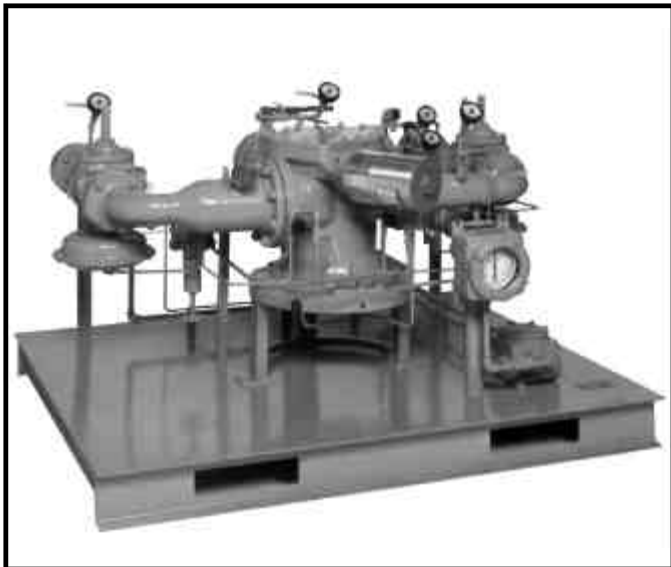
OPERATION

The **ASDI BLEND-AIRE**® LPG/Air mixer safely and accurately combines LPG vapor with compressed air to deliver a natural gas compatible mixture at pressures from 10 psig [0.7 kg/cm²] to 150 psig [10.3 kg/cm²]. The LPG/air mixture created by the **BLEND-AIRE**® will burn with the same characteristics and efficiency as natural gas plus it does not require burner adjustments.

The **BLEND-AIRE** offers high pressure mixing to feed city utilities or supplement natural gas pipeline distribution. The heart of the **BLEND-AIRE** is a piston suspended within a three port mixing valve. Compressed air enters one port. LPG vapor enters another port, and a mixture of LPG/air that is compatible with natural gas discharges from the third port. Horizontal rotation of the piston increases or decreases the volumetric ratio of LPG vapor to air, hence increasing or decreasing the calorific value of the LPG/Air mixture within a tolerance +/-2%. Vertical travel of the piston increases or decreases the volumetric flow of LPG/Air. Since the **BLEND-AIRE** is pressure balanced, it responds quickly to load changes. Both the air line and LPG vapor line have check valves to ensure safe mixing. In addition, sufficient air pressure must be available before the gas regulator will open to allow the mixing process to proceed.

STANDARD FEATURES

- Meets the design requirements of NFPA Pamphlet 58 for gas/air mixers.
- All wiring, controls, electrical components and their installation comply with recognized code standards defined in NFPA Pamphlets 58 and 70.
- Explosion proof configuration, suitable for Class I, Division 1, Group D environments.
- Factory Mutual (FM) Approved.
- Remote mounted **PROCESS CONTROLLER** (Control Panel) with integral first out annunciator.
 - Air pressure display
 - Inlet LPG pressure display
 - Inlet LPG temperature display
 - Differential pressure alarm
 - Vaporizer limits alarm
- Explosion proof junction box with terminal strip for easy field connection to **PROCESS CONTROLLER**.
- Air actuated automatic safety shutoff valve.
- High turndown ratio.
- Smooth and rapid response to flow rate changes.
- Manual ratio adjustment or optional automatic ratio control package.
- Skid mounted and complete with all operating and safety controls.
- Rigorous factory testing under strict ISO9001 conditions.

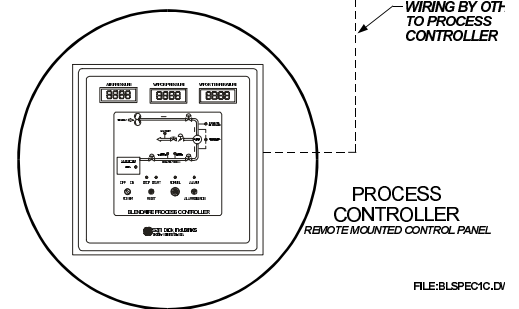
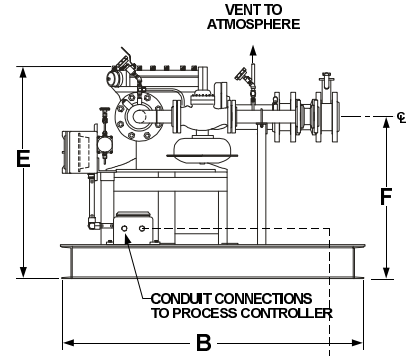
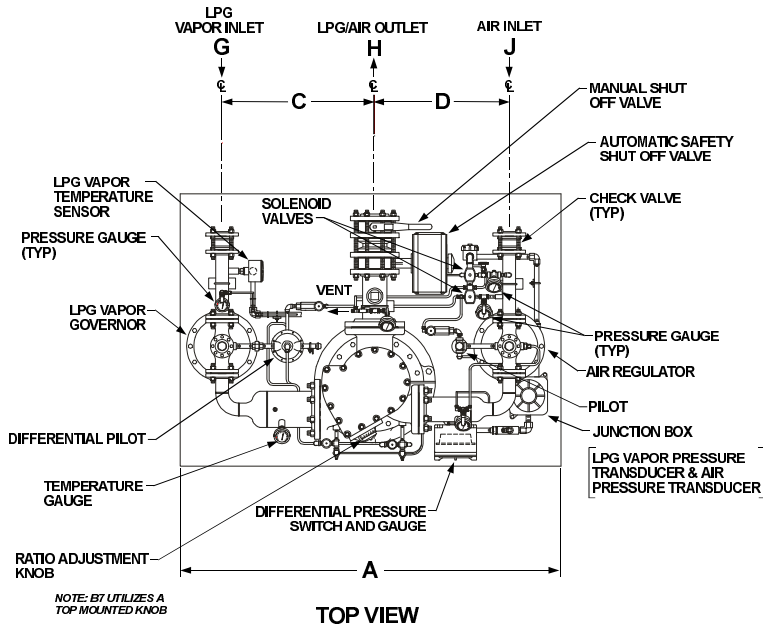


S P E C I F I C A T I O N S

MODEL		B3	B4	B5	B6	B7					
OUTLET PRESS.		HEAT VALUE CAPACITY IN MILLIONS (000,000)									
PSIG	KG/CM ²	BTU/H	KCAL/H	BTU/H	KCAL/H	BTU/H	KCAL/H	BTU/H	KCAL/H	BTU/H	KCAL/H
10	0.7	16.0	4.0	32.0	8.1	64.0	16.1	160.0	40.3	336.0	84.5
20	1.4	19.0	4.8	38.0	9.6	76.0	19.2	190.0	47.9	392.0	99.6
30	2.1	21.5	5.4	43.0	10.8	86.0	21.7	215.0	54.2	450.0	113.4
40	2.8	24.0	6.1	48.0	12.1	96.0	24.2	240.0	60.5	504.0	126.8
50	3.5	26.0	6.6	52.0	13.1	104.0	26.2	260.0	65.5	546.0	137.4
60	4.2	28.0	7.1	56.0	14.1	112.0	28.2	280.0	70.6	588.0	148.0
70	4.9	30.0	7.6	60.0	15.1	120.0	30.2	300.0	75.6	624.0	157.0
80	5.6	31.5	7.9	63.0	15.9	126.0	31.8	315.0	79.4	660.0	166.1
90	6.3	33.0	8.3	66.0	16.6	132.0	33.3	330.0	83.2	696.0	175.1
100	7.0	34.5	8.7	69.0	17.4	138.0	34.8	345.0	86.9	726.0	182.6
110	7.7	36.0	9.1	72.0	18.1	144.0	36.3	360.0	90.7	756.0	190.2
120	8.4	37.0	9.3	75.0	18.9	150.0	37.8	375.0	94.5	786.0	197.8
130	9.1	39.0	9.8	78.0	19.6	155.0	39.1	390.0	98.3	816.0	205.3
140	9.8	40.0	10.1	80.0	20.2	160.0	40.3	400.0	100.8	846.0	212.9
150	10.6	41.0	10.3	83.0	20.9	165.0	41.6	415.0	104.6	870.0	218.9

Capacity ratings valid for LPG/Air mixtures from 1,000 BTU/scf. to 1,700 BTU/scf. (8,900 kcal/nm³ to 15,130 kcal/nm³).

DIMENSIONAL DRAWING

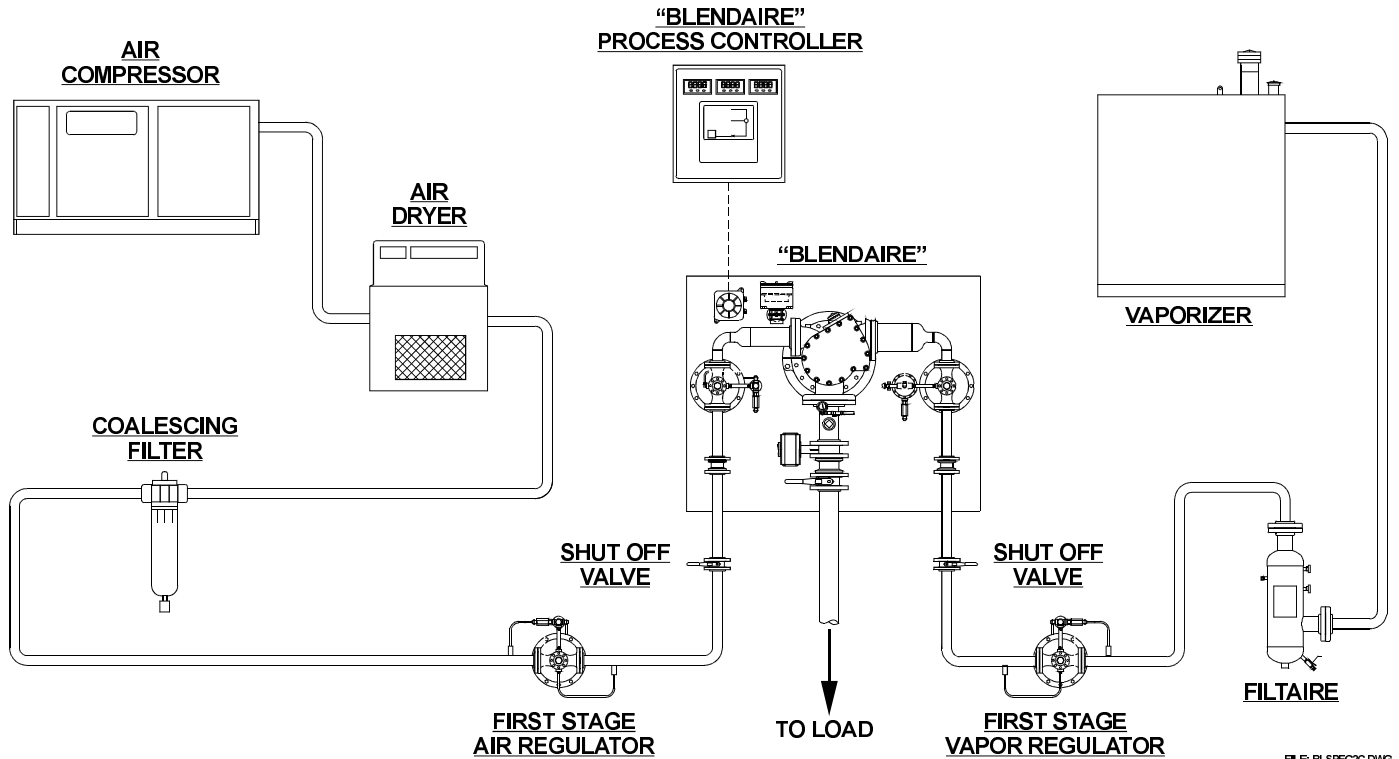


FILE:BLSPEC1C.DW

MODEL	A	B	C	D	E	F	G*	H*	J*
B3	58" 1473 mm	46" 1168 mm	21-3/4" 552 mm	20-3/8" 517 mm	26-1/8" 664 mm	21-3/8" 542 mm	2" FLG	2" FLG	2" FLG
B4	58" 1473 mm	46" 1168 mm	23-1/2" 596 mm	21" 533 mm	29-5/8" 752 mm	23-7/8" 606 mm	2" FLG	2" FLG	2" FLG
B5	64" 1625 mm	45" 1143 mm	24-3/8" 619 mm	22-7/8" 581 mm	31-1/2" 800 mm	24-1/4" 615 mm	2" FLG	3" FLG	2" FLG
B6	70" 1778 mm	50" 1270 mm	28-1/2" 725 mm	24-7/8" 632 mm	39" 990 mm	29-3/4" 756 mm	3" FLG	4" FLG	3" FLG
B7	88" 2236 mm	70" 1778 mm	38-1/2" 978 mm	36-1/2" 927 mm	45-1/4" 1150 mm	33-1/4" 844 mm	4" FLG	6" FLG	4" FLG

*150# ANSI RFSO mating flanges are provided for air inlet, LPG vapor inlet and mixed gas outlet.

NOTE: Dimensions shown are standardized for reference only; dimensions and arrangement may vary according to specific flow sizing requirements.



BLENDARE[®] is a registered U.S. trademark of **Algas-SDI**.



...Innovative liquid vaporizing and gas mixing solutions



Home Office:

1140 NW 46th Street
PO Box 70498
Seattle, Washington 98107 USA

Tel: 206.789.5410
Fax: 206.789.5414

e-mail: sales@algas-sdi.com
internet: www.algas-sdi.com

Beijing Office:

Room A1007
Huibin Office Building
Number 8 Beichendong St., Chaoyang District
Beijing 100101, PRC

Tel: 86.10.6499.3818
Fax: 86.10.6499.3817

e-mail: algasbj@public.east.cn.net

Mexico Office:

Bosque de Alisos number 47-A 5 Piso
Col. Bosques de las Lomas
Mexico D.F. 05120

Tel: 52.5261.8100
Fax: 52.5259.8085

e-mail: algas_sdi@cft.com.mx

Your ASDI distributor:



Form: B0400