

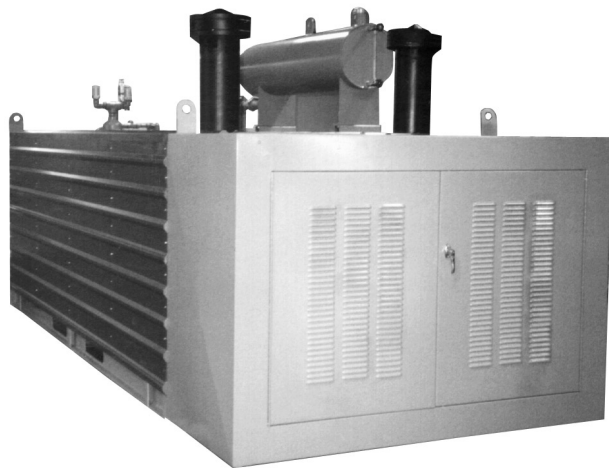
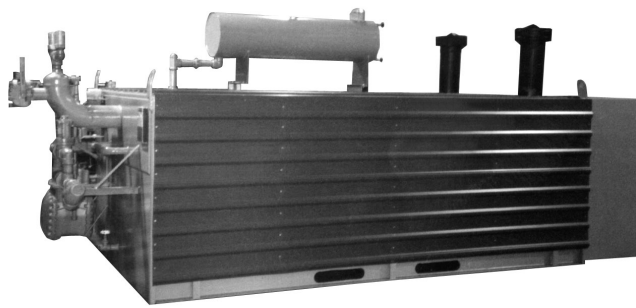
Algas-SDI™

...Innovative liquid vaporizing and gas mixing solutions

ISO 9001
Certified

Aquavaire

Horizontal Waterbath Vaporizer Models: Q1650H through Q15000H



- *Pressure balanced, high capacity waterbath vaporizer.*
- *Heavy duty Eclipse industrial modulating burner requires no adjustments, even at high elevations.*
- *Simple push button start - no hassle operation.*
- *Eight point annunciation.*
- *Designed for extreme weather conditions. Proven reliability to -40°F.*
- *Built-in heavy ends separation chamber - prevents clogging of regulators and other downstream devices.*
- *Best in class, double protected cabinet - powder coating over heavy duty sheet steel.*
- *100% Turndown.*

Factory
Mutual
System
Approved

ECLIPSE
Innovative Thermal Solutions

Specifications

	MODEL	Q1650H*	Q2200H*	Q3300H*	Q4400H*	Q5500H	Q7500H	Q10000H	Q12500H	Q15000H
Vaporization Capacity**	kg/hr	3,170	4,220	6,330	8,450	10,550	14,400	19,200	24,000	28,800
	Million BTU/hr	150	200	300	400	500	680	900	1,130	1,360
	Million kcal/hr	38	50	76	101	126	172	229	287	344
Nominal Capacity	US gallons/hr	1,650	2,200	3,300	4,400	5,500	7,500	10,000	12,500	15,000
Heat Exchanger Surface Area	ft ²	171	231	313	482	581	830	1,100	1,350	1,620
	m ²	15.8	21.5	29.1	44.8	54.0	77.1	102.2	125.4	150.5
Heat Exchanger Design Pressure	psig	250	250	250	250	250	250	250	250	250
	kg/cm ²	17.6	17.6	17.6	17.6	17.6	17.6	17.6	17.6	17.6
Heat Exchanger Test Pressure	psig	375	375	375	375	375	375	375	375	375
	kg/cm ²	26.3	26.3	26.3	26.3	26.3	26.3	26.3	26.3	26.3
Waterbath Operating Temp. (Adjustable)	F°	170	170	170	170	170	170	170	170	170
	C°	76.6	76.6	76.6	76.6	76.6	76.6	76.6	76.6	76.6
Waterbath Water Volume	U.S. gallons	1,080	1,190	1,444	2,450	3,500	4,550	6,000	6,800	7,500
	liters	4,088	4,522	5,487	9,310	13,300	17,290	22,800	25,840	28,500
Firetube Surface Area	ft ²	191	284	369	512	673	825	1,250	1,560	1,875
	m ²	17.7	26.4	34.3	47.6	62.5	87.2	116	145	174.2
Burner Fuel Input	Million BTU/hr	1.96	2.52	3.8	4.7	6.05	8.25	1.1	1.3	1.6
	Million kcal/hr	.493	.635	.957	1.184	1.528	2.079	2.778	3.276	4.032
Shipping Weight	lbs	9,000	11,000	15,000	18,000	21,000	28,000	33,000	37,000	40,000
	kg	4,086	4,994	6,810	8,172	9,534	12,712	14,982	16,798	18,160
Operating Weight	lbs	18,400	21,400	27,600	39,300	51,400	67,600	85,200	96,100	105,200
	kg	8,354	9,716	12,530	17,842	23,336	30,690	38,681	43,629	47,761

*FM Approved.

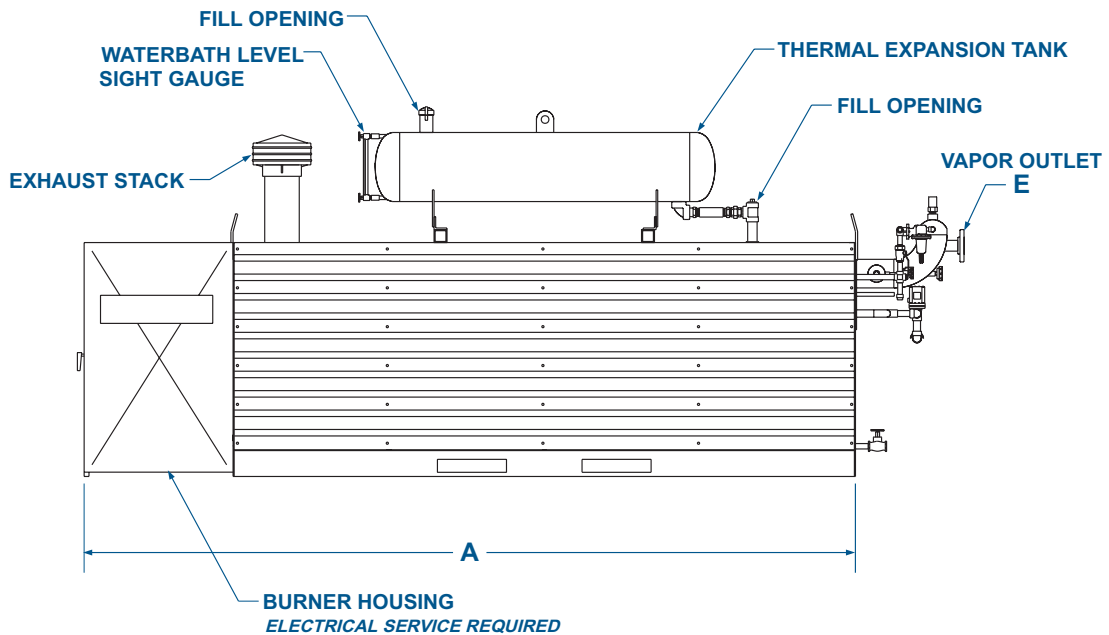
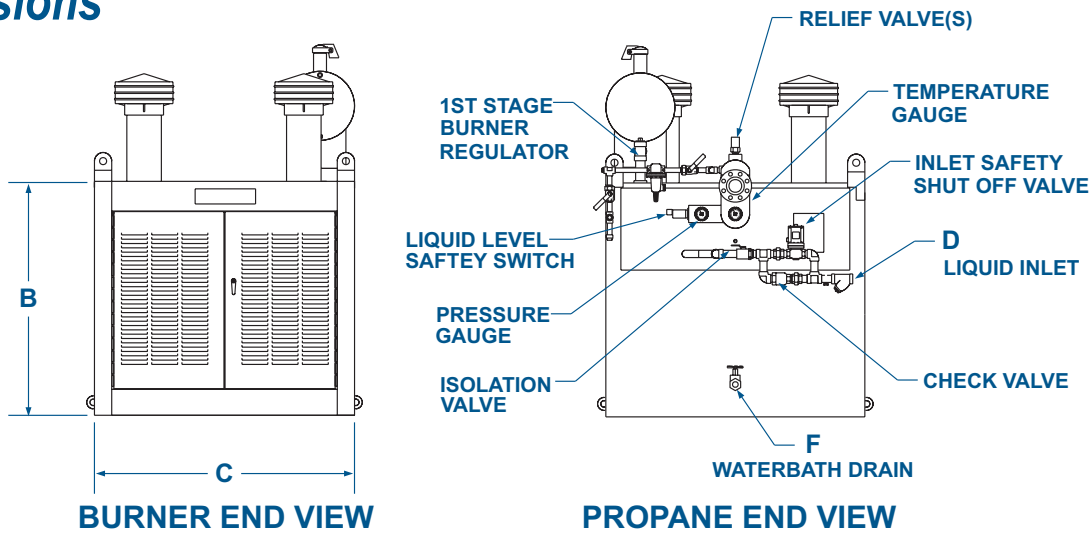
**Vaporization capacity ratings at 100 psig (7.0 kg/cm²) and at 0°F (-17.8°C) liquid propane.

†460V Available 3 phase only.

Features

- Meets the design requirements of NFPA Pamphlet 58 for gas fired waterbath vaporizers.
 - All wiring, controls, electrical components, and their installation comply with recognized code standards defined in NFPA 58, NFPA 59, and NFPA 70.
 - Heat exchanger is fabricated and stamped in accordance with ASME Pressure Vessel Code, Section VIII, Division 1.
 - LPG pressure vessel design rating: 250 psig at 650°F (17.6 kg/cm² at 343°C).
 - ASME or UL approved relief valve: 250 psig (17.6 kg/cm²).
 - Multi-header, multi-pass heat exchanger assures optimum velocity for complete vaporization and provides superheat to the vapor at rated capacity.
 - Minimum 15°F [8.4°C] superheat @ 100% capacity.
 - Galvanized thermal expansion tank with water level sight gauge assures heat exchanger protection.
 - High quality forced draft power burner provides fast response to load changes.
 - Combustion efficiency of 80% minimum.
 - Electronic flame safeguard assures positive and safe ignition.
 - Two electrically operated main fuel shutoff valves in the gas train.
 - Float activated high LPG liquid level shutdown switch.
 - First Out Annunciator Display Points:
 - Flame failure
 - High LPG level
 - Low water level
 - High water temperature
 - High gas pressure
 - Power Off/Reset
 - Spare display points for connection to mixing system, etc.
 - Water circulation pumps eliminate thermal stratification and increase heat transfer.
 - Removable burner enclosure for maintenance access.
 - Complete with all operating and safety controls and liquid and vapor manifolds. Ready to connect to plant facilities.
 - All exterior metal surfaces are mechanically cleaned, primed, and painted.
 - Factory tested, packaged, and mounted on lengthwise beams with lifting lugs and forklift access holes.**
 - Factory Mutual (FM) Approved.
- **Forklift access on Q1650H, Q2200H, and Q3300H only

Dimensions



MODEL	A	B	C	D	E	F
Q1650H	183" 4648 mm	45" 1143 mm	57" 1448 mm	1 1/2" FNPT	2" FNPT	1 1/4" NPT
Q2200H	180" 4572 mm	54" 1372 mm	60" 1524 mm	1 1/2" FNPT	2 1/2" FNPT	1 1/4" NPT
Q3300H	176" 4470 mm	54" 1372 mm	76" 1930 mm	2" FNPT	3"-300# FLG	1 1/4" NPT
Q4400H	243" 6172 mm	57" 1448 mm	79" 2007 mm	2" FNPT	4"-300# FLG	1 1/4" NPT
Q5500H*	282" 7163 mm	57" 1448 mm	78" 1981 mm	2" FNPT	4"-300# FLG	1 1/4" NPT
Q7500H*	240" 6096 mm	97" 2464 mm	91" 2311 mm	2 1/2" FNPT	6"-300# FLG	1 1/2" NPT
Q10000H*	276" 7010 mm	99" 2515 mm	94" 2388 mm	2 1/2" FNPT	6"-300# FLG	2" NPT
Q12500H*	310" 7874 mm	99" 2515 mm	94" 2388 mm	3" FNPT	8"-300# FLG	2 1/2" NPT
Q15000H*	346" 8788 mm	99" 2515 mm	94" 2388 mm	3" FNPT	8"-300# FLG	2 1/2" NPT

Product improvement is a continuing goal at Algas-SDI.

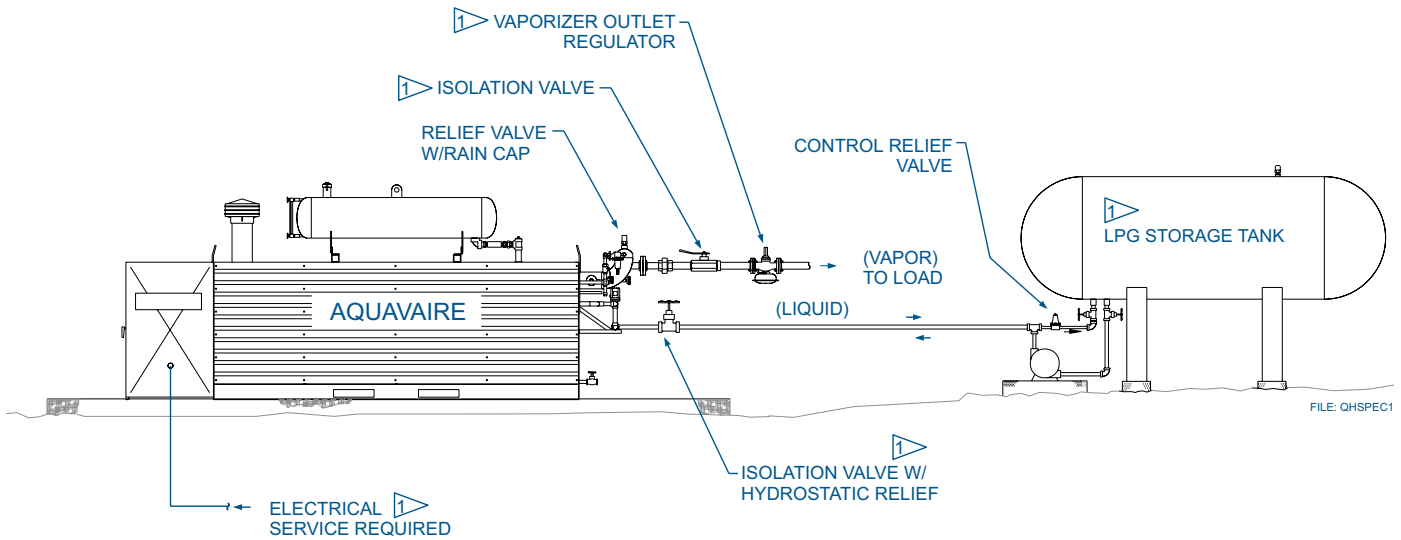
Designs and specifications are subject to change without notice or obligation.

* Approximate dimensions for these models.

NOTES:

1 BY OTHERS.

2. INSTALL SYSTEM PER NFPA 58 AND 70 AND OTHER APPLICABLE CODES.
3. NO CHECK VALVES IN LIQUID LINE; LIQUID MUST BE ABLE TO FLOW BOTH DIRECTIONS.



AQUAVAIRE® is a registered U.S. trademark of **Algas-SDI**.



ISO 9001
Certified

...Innovative liquid vaporizing and gas mixing solutions

Home Office:

1140 NW 46th Street
PO Box 70498
Seattle, Washington 98107 USA

Tel: 206.789.5410
Fax: 206.789.5414

e-mail: sales@algas-sdi.com
internet: www.algas-sdi.com

Beijing Office:

Room A1007 Huibin Office Building
No. 8 Beichen Dong St.
Chaoyang District, Beijing 100101, P.R.C.

Tel: 86.10.64969593, 64993818
Fax: 86.10.64969592, 64993817

e-mail: algasbj@public.east.cn.net

Mexico Office:

Bosque de Alisos number 47-A 5 Piso
Col. Bosques de las Lomas
Mexico D.F. 05120

Tel: 52.5261.8100
Fax: 52.5259.8085

e-mail: algas-sdi@cft.com.mx

Your ASDI distributor:

ECLIPSE™
Innovative Thermal Solutions

Algas • SDI

Form: QH0301