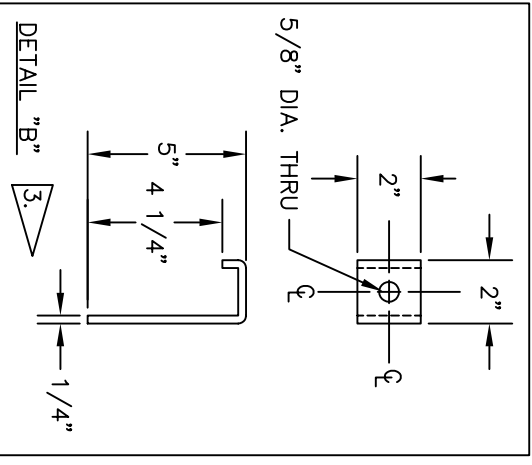
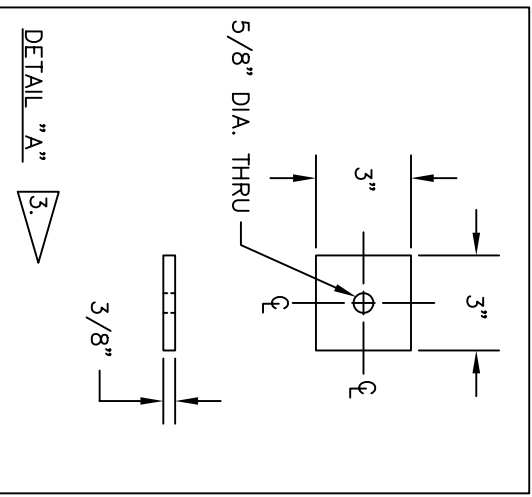
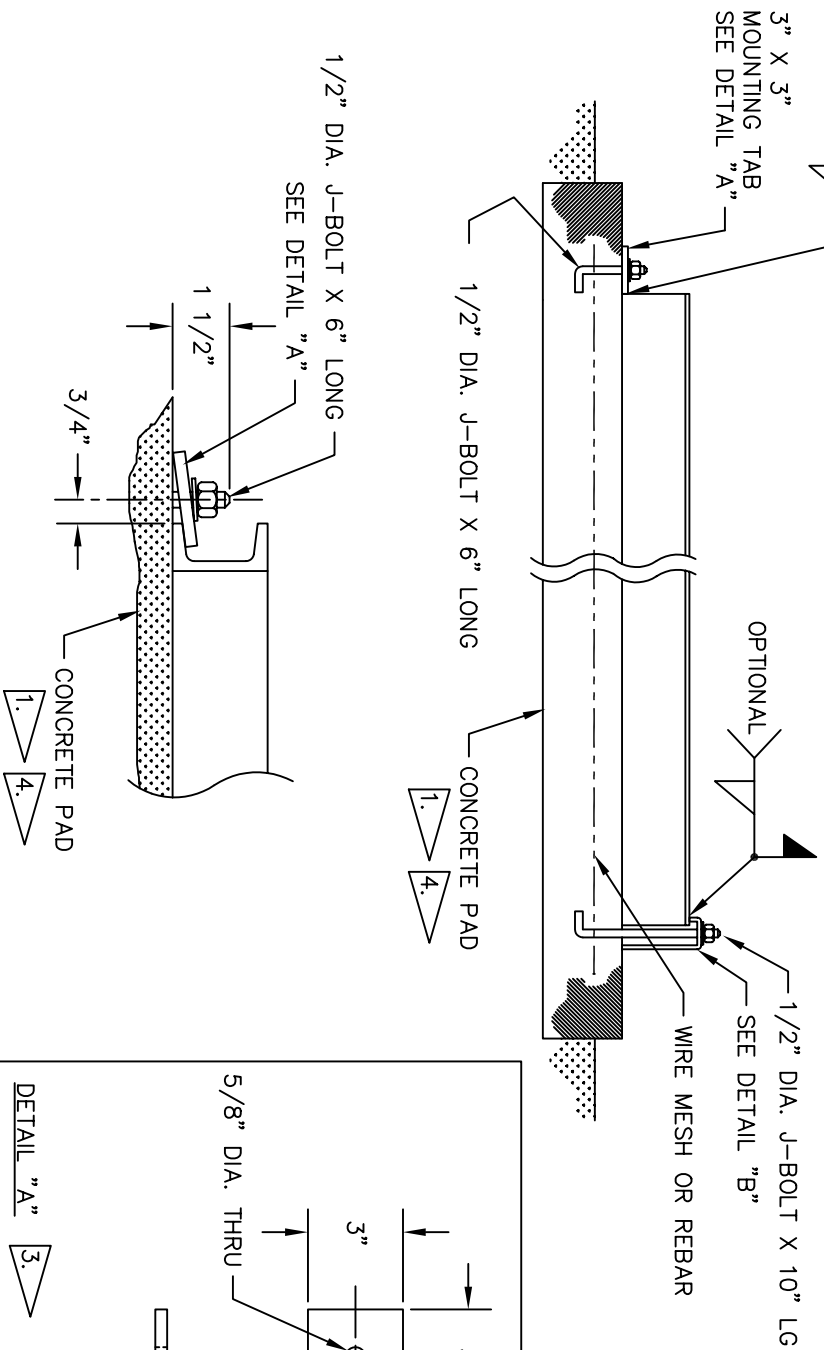


# TYPICAL PROFILE VIEWS OF EQUIPMENT BASE AND MOUNTING



- 1 USE HIGH STRENGTH TRANSIT CONCRETE MIX. MIX RATIO TO PROVIDE FOR 2500 PSI MIN. COMPRESSIVE STRENGTH AFTER 7 DAY SET.
- 2 ANCHOR BOLTS SHOULD BE GRADE 5 (MIN.).
- 3 MATERIAL: A36 STEEL PLATE OR EQUIVALENT.
- 4 SIZE AND THICKNESS DEPEND ON THE SIZE AND WEIGHT OF EQUIPMENT TO BE MOUNTED.

REVISIONS		Rev. by
Rev	Description	
A	INITIAL RELEASE	9-8-93

151 South Michigan Street, Seattle, Washington, USA 98108  
Tel: (206) 789-5410 Fax: (206) 789-5414

Drawn By BRISSON  
Checked By  
Approved By

Date 9-8-93  
Scale NONE  
Job No. A.S.D.I. STD.

Part Number

This drawing is the property of Algas\*SDI and is not to be reproduced nor used in any form without the written consent of Algas\*SDI. All rights are reserved.

Title

## TYPICAL ANCHORING METHODS

Dwg. No. **1701-8001**

Size **B** Sht. No. 1 of 1 Rev **A**