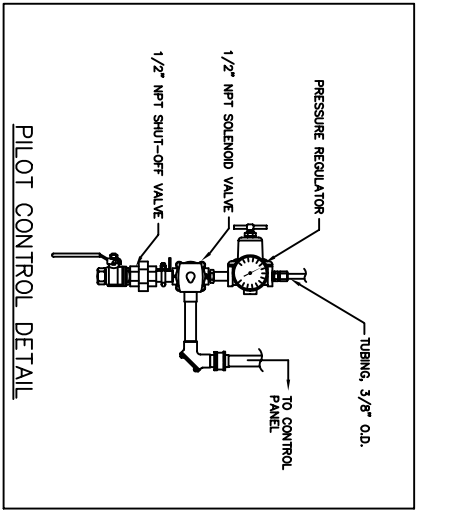
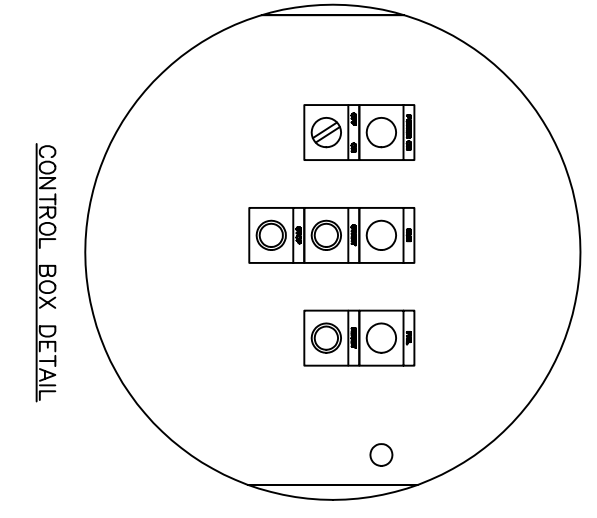
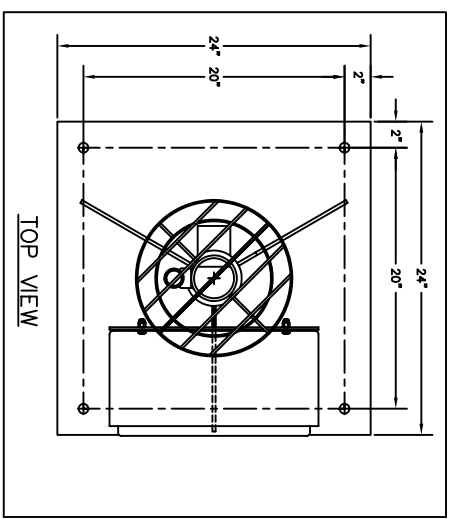
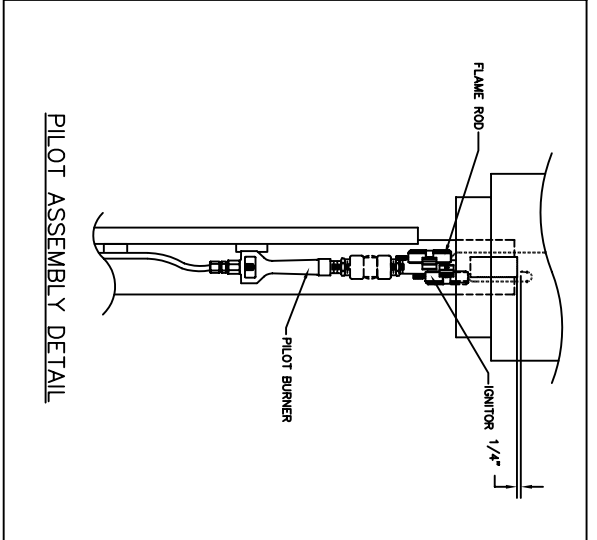
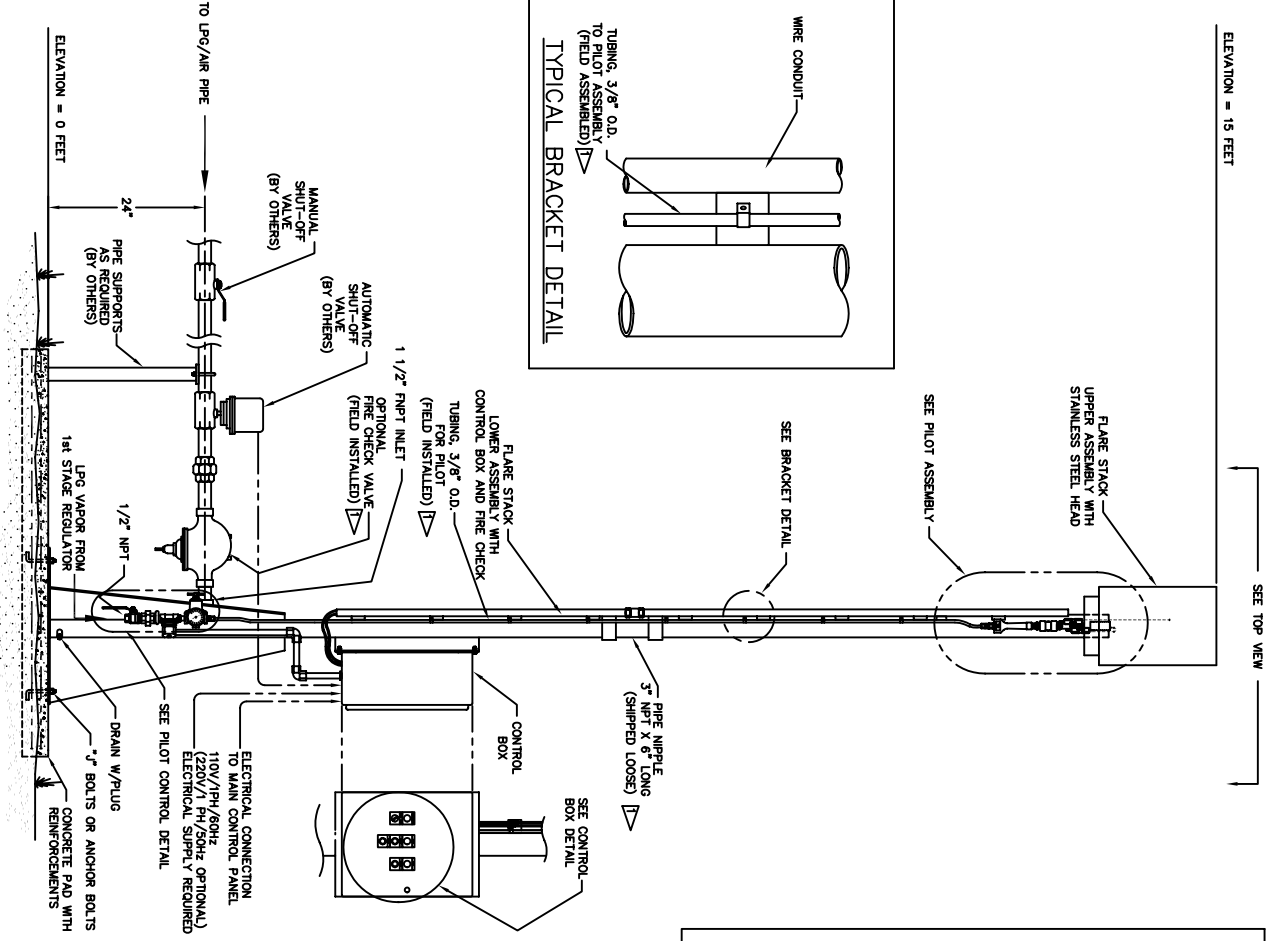
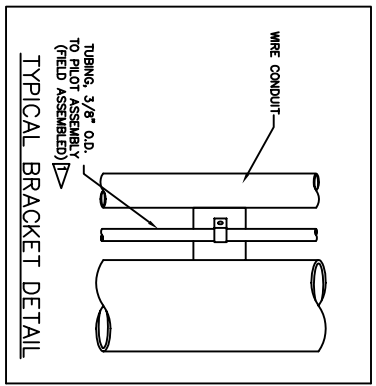


ELEVATION = 15 FEET



- NOTES
1. FIRE CHECK, 3/8" TUBING, 3" NPT NIPPLE, CLAMPS AND FASTENERS TO BE SHIPPED SEPARATELY.
 2. DRY CONTACT PROVIDED FOR CONTROLLING AUTOMATIC SHUT-OFF VALVE. RATING: 7A @ 240V
 3. AUTOMATIC SHUT-OFF VALVE REQ'S: 20 SEC. OPENING RATE 5 SEC. CLOSING RATE
 4. FINISH: KSD/P5-3 "BLUE" HIGH TEMP
 5. FOR GENERAL LOCATION INSTALLATION
 6. SHIPPING WEIGHT: 846 LBS (384 KG)

		HIGH CAPACITY FLARE STACK INSTALLATION/EQUIPMENT DRAWING	
12000 Highway 57, Suite 200, Houston, TX 77033 USA 800-875-5555	Date: 6-9-97 Drawn by: BRISSON Scale: NONE App'd by: A.S.D.L. STD.	Part Number: 10032	1601-6003 1 of 1